

Material Features:

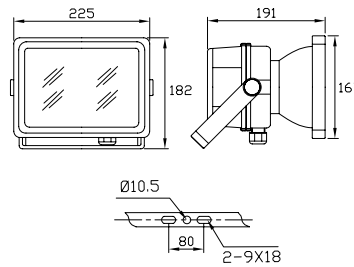
- High-pressure die-casting aluminum case, treated with anti corrosion electrostatic powder spraying
- High temperature-proof silicon gasket, Tempered safety glass
- High purity aluminum pre-anodized reflector

Applicable places:

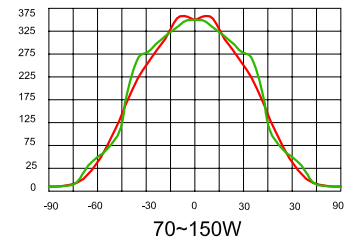
- Illumination of the Building Façade, Billboards, Parking Places, sculptures and Grass Lands etc.

IP65 Class I     

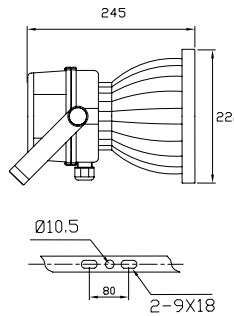
ELGT309-I



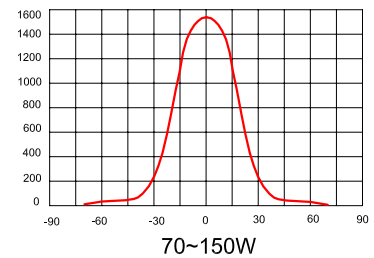
Light Distribution Curve (Cd/1000lm)



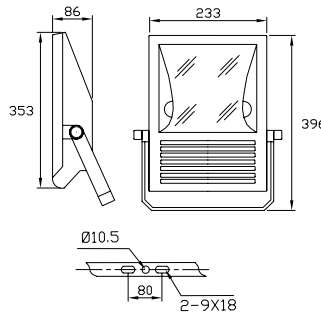
EGT309-II



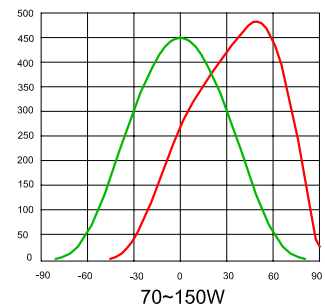
Light Distribution Curve (Cd/1000lm)



ELGT303-I



Light Distribution Curve (Cd/1000lm)



Model No	Light Source	Power W	Power factor pf	Input Voltage V/Hz	Lamp Type	Lamp Life Hr
ELGT309-I	MH	70~150	>0.85	220~240V/ 50-60Hz	Rx7S	12000
ELGT309-II	MH	70~150	>0.85	220~240V/ 50-60Hz	Rx7S/G12	12000
ELGT303-I	MH	70~150	>0.85	220~240V/ 50-60Hz	Rx7S	12000